

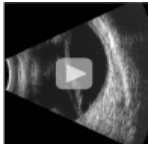


B-Scan Ophthalmic Ultrasound

For imaging of the retina and the orbit. Outstanding image quality yet easy to use.

The Optos portable OTI-Scan 3000 is a modular high-resolution ophthalmic ultrasound system that can be configured to meet the needs of your practice. It is available as a B-Scan system, an A-Scan system, a UBM system, or a combination B-Scan/A-Scan and UBM system.

- 10MHz & 20MHz B-Probes provide high-resolution imaging of the retina and the orbit
- Real-time digital video recording, playback, and editing of B-Scan, A-Scan, and the examiner voice recording.
- Playback can be reviewed frame by frame or in slow motion
- Dual Screen display including variable zoom
- Superior image quality with:
 - Wide Range "Gain"
 - Wide "Dynamic Range"
 - Auto/Manual TGC
- Probe ocular orientation marking
- Easy "plug & play" with any laptop or PC
- Portable and lightweight
- Upgradeable to any B-Scan/A-Scan/UBM combo



RD + Cyst

[Play Video](#)

Optos' Ultrasound is so flexible and portable that it allows measurements to be taken in remote settings, including at high altitude on Mount Everest.