

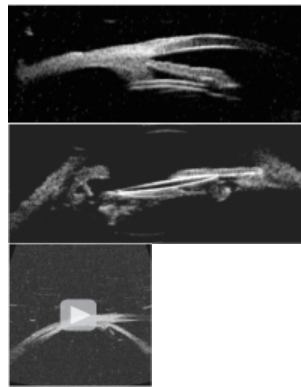


## UBM Ophthalmic Ultrasound

### Anterior segment scanning. Exceptional imaging.

The Optos portable OTI-Scan 3000 is a modular high-resolution ultrasound system that can be configured to meet the needs of your practice. It is available as a B-Scan, an A-Scan system, and/or UBM system, or a combination B-Scan/A-Scan /UBM system.

- 35MHz & 50MHz probes provide high-resolution cornea/anterior chamber imaging.
- Focused- or wide-field scanning (angle-to-angle) with advanced measurements including angle analysis and anterior chamber distance.
- Real-time digital video recording, playback, and editing of B-Scan, A-Scan or UBM including examiner voice.
- Recorded exam can be played frame by frame or slow motion
- Dual Screen display including variable zoom.
- Superior image quality with:
  - Wide Range "Gain"
  - Wide "Dynamic Range"
  - Auto/Manual TGC
- Probe orientation marking
- Easy "plug & play" with any laptop or PC
- Portable and lightweight
- Upgradeable to B-Scan/A-Scan/UBM combo



HF35 30% Brighter

[Play Video](#)

Optos' Ultrasound is so flexible and portable that it allows measurements to be taken in remote settings, including at high altitude on Mount Everest.